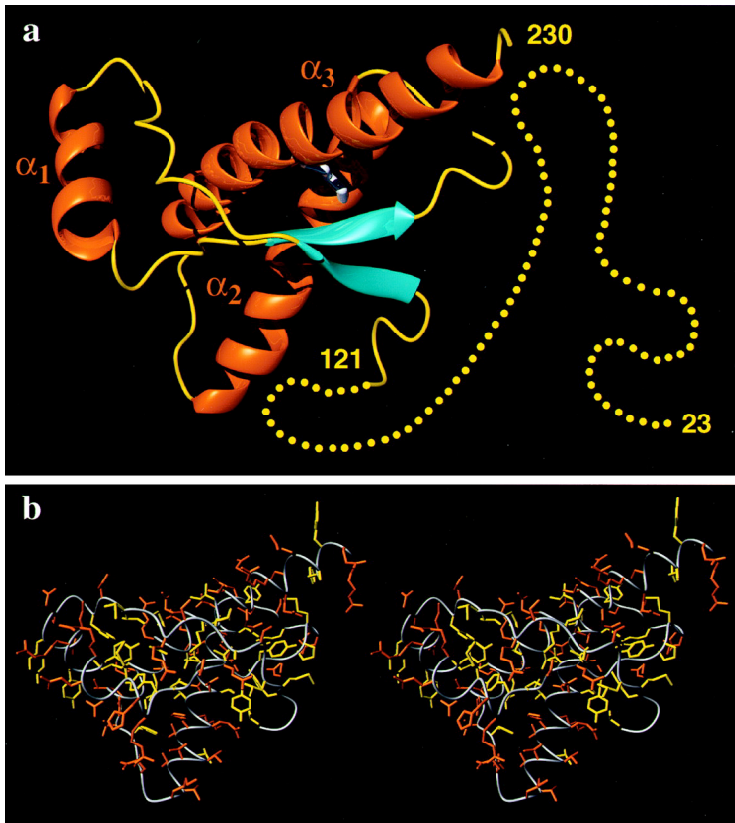
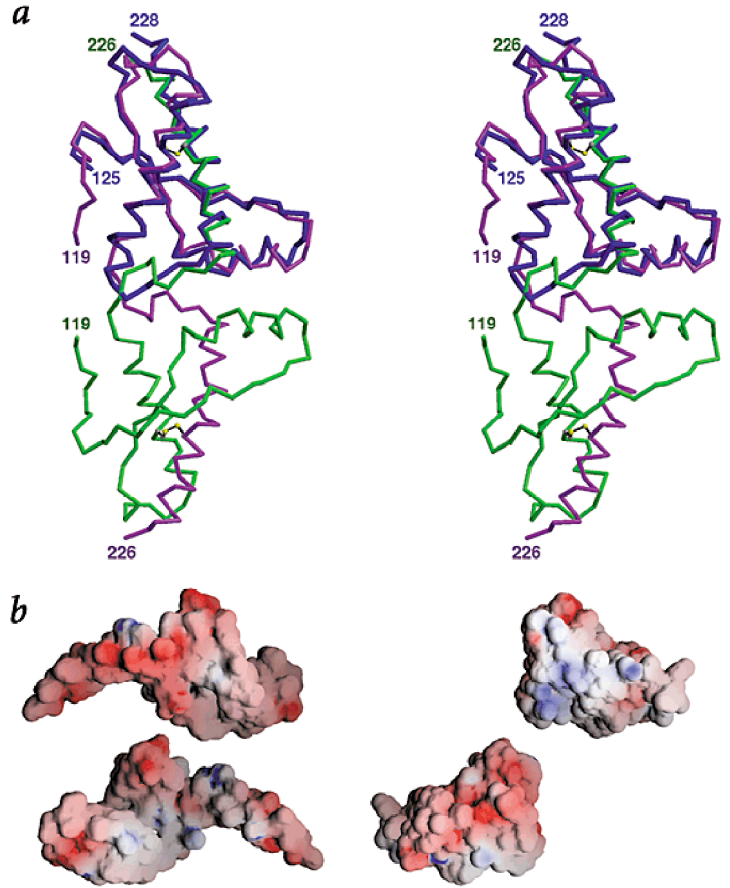


Prion Protein Structure

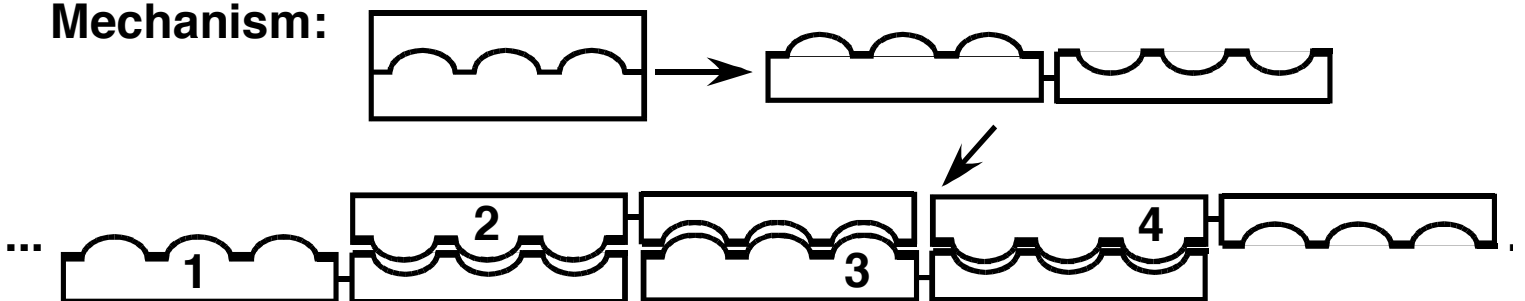
The NMR Structure of PrP^C: largely α -helical



Domain swapping PrP in an aggregation intermediate?



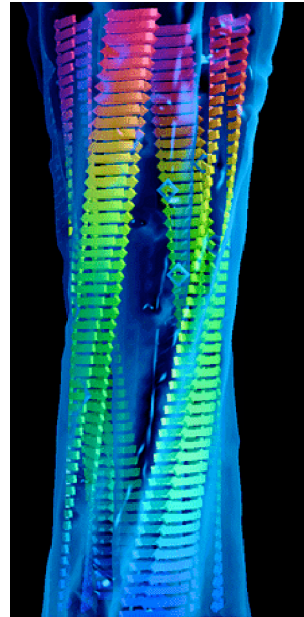
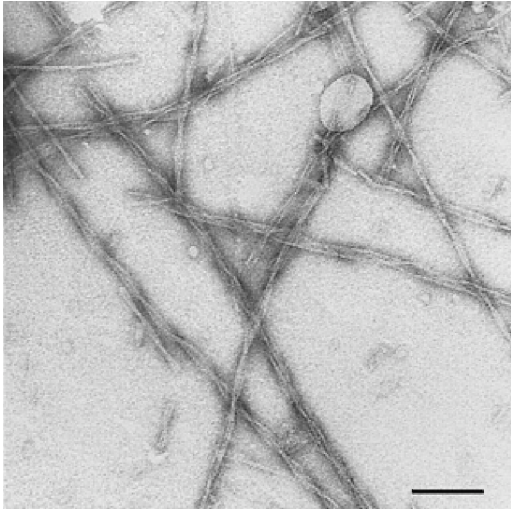
Specific Aggregation Mechanism:



Suggested Amyloid Aggregate Structures

Crossed β -sheet model

Amyloid Fibril



Continuous intermolecular β sheets run the length of the fibril

Aggregation of Insulin

